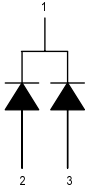


SOT23 HIGH SPEED SWITCHING DIODE PAIR COMMON CATHODE

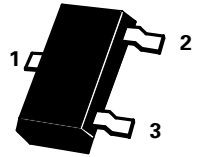
ISSUE 2 – JANUARY 1995

BAV74

PIN CONFIGURATION



PARTMARKING DETAIL
BAV74 – JA



SOT23

ABSOLUTE MAXIMUM RATINGS.

PARAMETER	SYMBOL	VALUE	UNIT
Continuous Reverse Voltage	V_R	50	V
Average Output Rectified Current ($t_{av} = 10\text{ms}$)	I_o	100	mA
Continuous Forward Current	I_F	150	mA
Peak Forward Current ($t = 15\text{ms}$)	I_{FM}	200	mA
Forward Surge Current ($t=1\mu\text{s}$)	I_{FS}	1000	mA
Power Dissipation at $T_{amb}=25^\circ\text{C}$	P_{tot}	330	mW
Operating and Storage Temperature Range	$T_j; T_{stg}$	-55 to +150	$^\circ\text{C}$

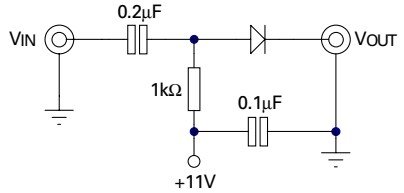
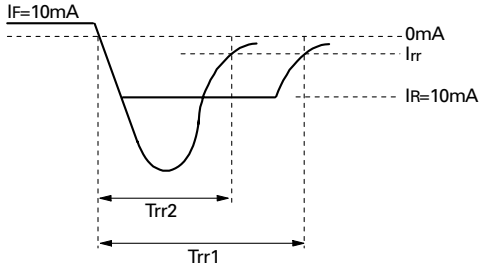
ELECTRICAL CHARACTERISTICS (at $T_{amb} = 25^\circ\text{C}$ unless otherwise stated).

PARAMETER	SYMBOL	MIN.	MAX.	UNIT	CONDITIONS.
Breakdown Voltage	V_{BR}	51		V	$I_R = 5\mu\text{A}$
Forward Voltage	V_F		1.0	V	$I_F = 100\text{mA}$
Reverse current	I_R		0.1 100	μA μA	$V_R = 50\text{V}$ $V_R = 50\text{V}, T_{amb} = 125^\circ\text{C}$
Capacitance	C_o		2.0	pF	$V_R = 0$
Reverse Recovery Time	t_{rr}		4 2	ns ns	$I_F = I_R = 10\text{mA}, I_{RR} = 1\text{mA}$ $I_F = 10\text{mA}, V_R = 6\text{V},$ $R_L = 100\Omega$

Spice parameter data is available upon request for this device

BAV74

Circuit For Measuring Switching Time

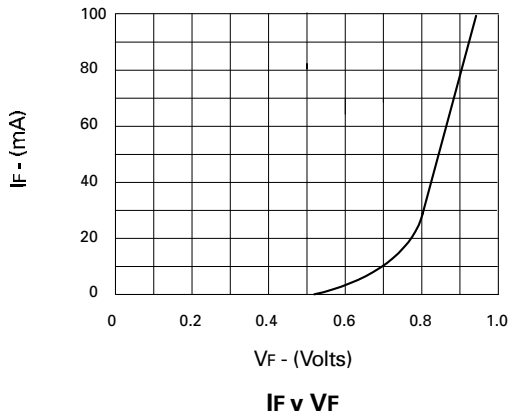


Pulse is supplied by a generator with the following characteristics:

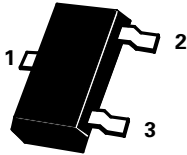
Output impedance = 50Ω
 Rise time $\leq 0.5\text{ns}$
 Pulse width = 100ns

Output is monitored on a sampling oscilloscope with the following characteristics:

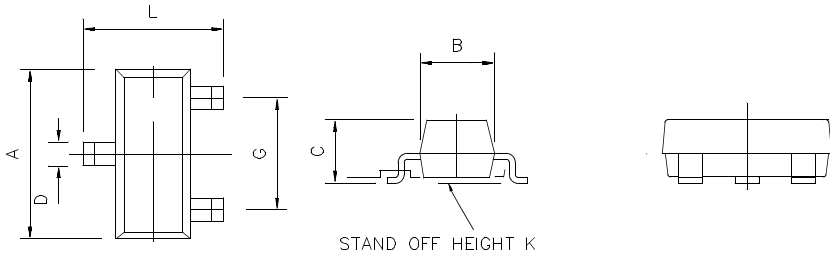
Input impedance = 50Ω
 Rise time $\leq 0.6\text{ns}$



BAV74



DIM	Millimeters		Inches	
	Min	Max	Min	Max
A	2.67	3.05	0.105	0.120
B	1.20	1.40	0.047	0.055
C	-	1.10	-	0.043
D	0.37	0.53	0.0145	0.021
F	0.085	0.15	0.0033	0.0059
G	NOM 1.9		NOM 0.075	
K	0.01	0.10	0.0004	0.004
L	2.10	2.50	0.0825	0.0985
N	NOM 0.95		NOM 0.37	



Zetex plc.
 Fields New Road, Chadderton, Oldham, OL9-8NP, United Kingdom.
 Telephone: (44)161 622 4422 (Sales), (44)161 622 4444 (General Enquiries)
 Fax: (44)161 622 4420

Zetex GmbH
 Streitfeldstraße 19
 D-81673 München
 Germany
 Telephone: (49) 89 45 49 49 0
 Fax: (49) 89 45 49 49 49

Zetex Inc.
 47 Mall Drive, Unit 4
 Commack NY 11725
 USA
 Telephone: (516) 543-7100
 Fax: (516) 864-7630

Zetex (Asia) Ltd.
 3510 Metroplaza, Tower 2
 Hing Fong Road,
 Kwai Fong, Hong Kong
 Telephone: (852) 26100 611
 Fax: (852) 24250 494

These are supported by
 agents and distributors in
 major countries world-wide
 ©Zetex plc 1997
Internet:
<http://www.zetex.com>

This publication is issued to provide outline information only which (unless agreed by the Company in writing) may not be used, applied or reproduced for any purpose or form part of any order or contract or be regarded as a representation relating to the products or services concerned. The Company reserves the right to alter without notice the specification, design, price or conditions of supply of any product or service.